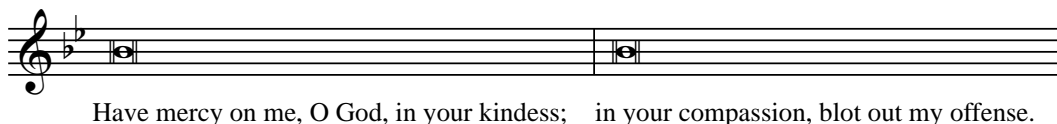


## Tone for Chanting Psalms



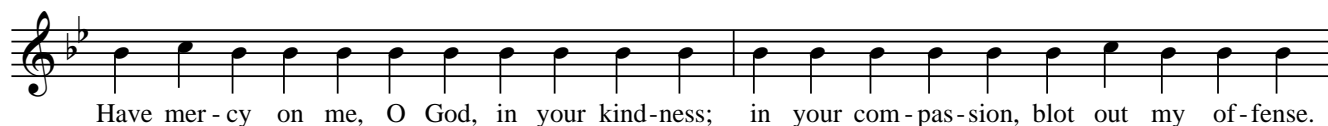
Singing everything on one pitch:



Raising the voice by a tone (whole step, like do to re) can emphasize a word:



or:



You can also jump up a fourth ("Here comes the the bride") to an accent:



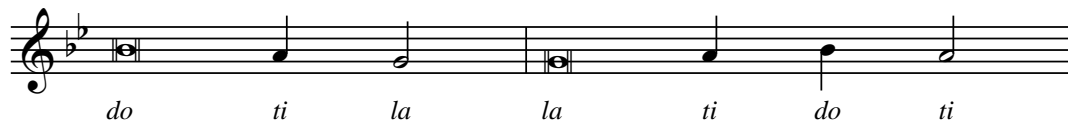
or:



Combining those two patterns can give a balanced, clear reading that *mostly* stays on one pitch.

We often call this, "straight chanting."

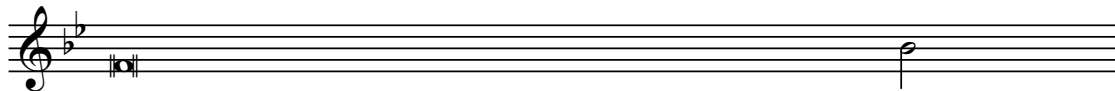
## Tone for Chanting Readings



*la* means we have  
reached the middle

*ti* means we  
are going on

*This is repeated as many times as needed, and then we end with:*



*so* means we are  
coming to the end

and we work our way  
up to the conclusion

on *do*.

Different sorts of endings:

