


# Singing the Prokeimenon and Alleluia Verses

## Tone 1 - prokeimenon melody (beginning and end)



mi fa so so

## verse melody

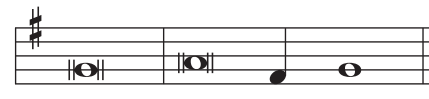


do re ti do

## Tone 2



ti do re la




do re ti do

## Tone 3



mi re ti




do re ti do

## Tone 4



do re mi fa so ti




do re ti do

## Tone 5



re di mi re ti

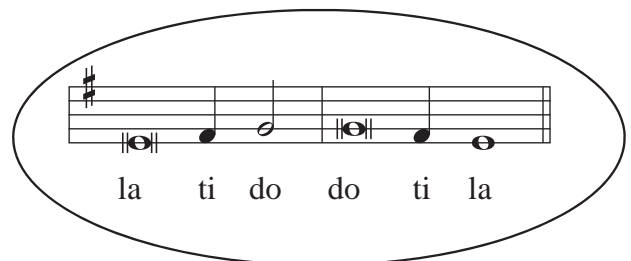


do re ti do

## Tone 6

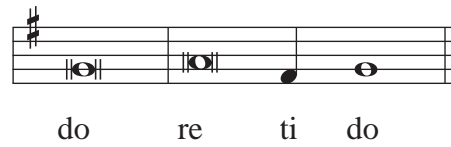
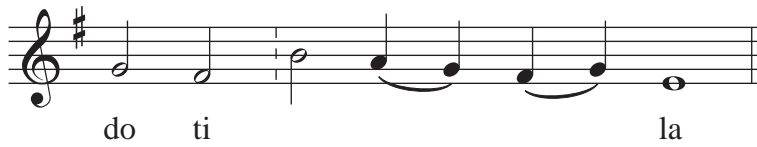


mi mi la si la

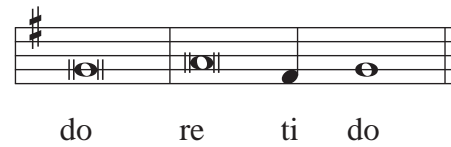
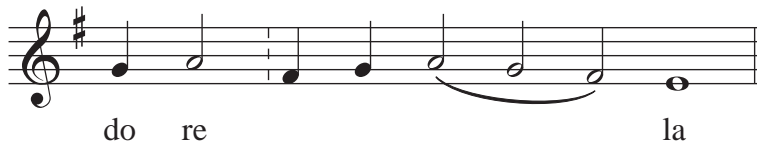


la ti do do ti la

### Tone 7



### Tone 8



After the cantor sings the prokeimenon or alleluia, the reader chants the verse(s). They are chanted using a psalm tone, as follows:

For tones 1-5 and 7-8: to the usual psalm tone (*do / re ti do*)

For tone 6: to the minor psalm tone (*la ti do / do ti la*)

If the reader has a very high or low singing range, the verse can be sung on a different pitch than the ones show here; these are jus the simplest "good pitches" to find.